

Regional Center of the East Bay

James M. Burton, Director
500 Davis Street, Suite 100, San Leandro, CA
94577
Phone: (510) 383-1200 • Fax: (510) 633-5022
E-mail: writetous@rceb.org
www.rceb.org



Spring 2011

Performance Report for Regional Center of the East Bay

Every year, the Department of Developmental Services (DDS) contracts with regional centers in California to serve consumers and families. And, every year DDS looks at how well the regional centers are doing. This report will give you information about your regional center.

Last year, at Regional Center of the East Bay (RCEB) we served about 15,200 consumers. The charts on page 2 tell you about the consumers we serve. You'll also see how well we are doing in meeting our goals and in fulfilling our contract with DDS.

At RCEB, we want to improve every year, do better than the state average, and meet or exceed the DDS standard. As you can see in this report, we improved over last year's performance in all areas.

The San Francisco Bay Area is a high cost of living, urban area. The majority of residential homes serving both children and adult regional center consumers are located in the two bay area counties served by RCEB (Alameda and Contra Costa). Although the percentage of RCEB children and adult consumers residing in out of home placement is slightly higher than the state average, supporting consumers in their own homes remains our priority as reflected by our improved performance in this area.

Although the number of RCEB consumers residing in developmental centers is higher than the state average, our total number has decreased. Historically our State Developmental Center population has always exceeded the state average due to the high number of RCEB consumers residing at Sonoma Developmental Center.

We hope this report helps you learn more about RCEB. If you have any questions or comments, please contact us!

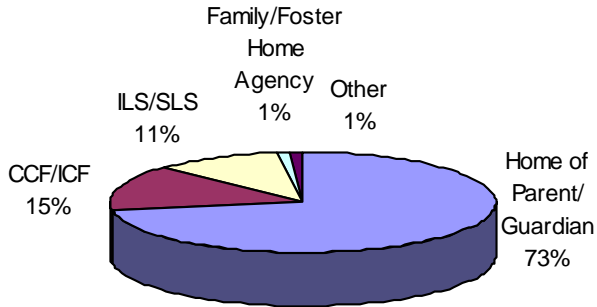
This report is a summary. To see the complete report, go to: www.rceb.org

Or contact Pam Thomas at **(510) 618-7708**

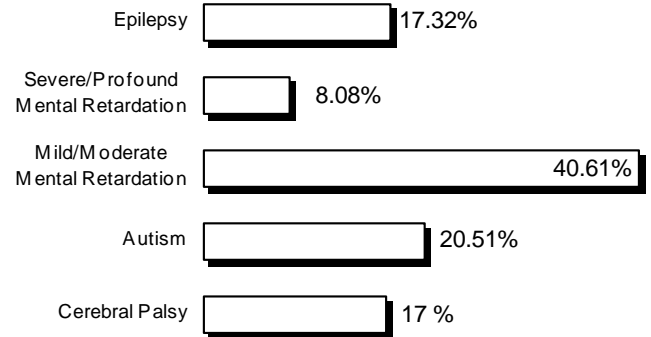
Who uses RCEB?

These charts tell you about who RCEB consumers are and where they live.

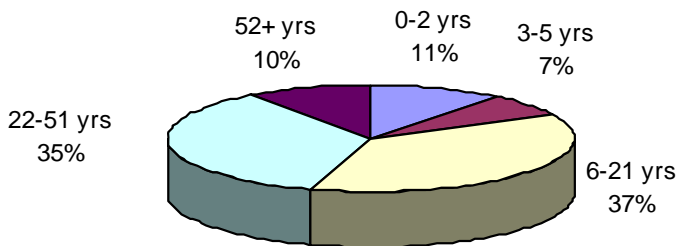
WHERE RCEB CONSUMERS LIVE



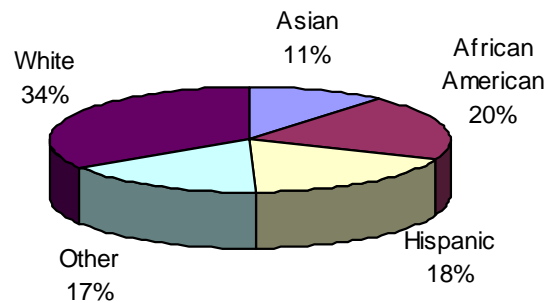
PRIMARY DIAGNOSIS OF RCEB CONSUMERS



AGE OF RCEB CONSUMERS



ETHNICITY OF RCEB CONSUMERS



How well is RCEB performing?

This chart tells you about 5 areas where DDS wants each regional center to keep improving.

The first column tells you how RCEB was doing at the beginning of 2010. And, the second column shows how RCEB was doing at the end of 2010.

To see how RCEB compares to the other regional centers in the state, compare the numbers to the state averages (in the shaded columns).

Regional Center Goals (based on Lanterman Act)	December 2009		December 2010	
	State Average	RCEB	State Average	RCEB
Less consumers live in developmental centers	0.91%	1.47%	0.83%	1.38%
More children live with families	98.48%	97.95%	98.60%	98.10%
More adults live in home settings*	73.20%	71.89%	73.99%	72.37%
Less children live in large facilities (more than 6 people)	0.13%	0.03%	0.13%	0.00%
Less adults live in large facilities (more than 6 people)	4.10%	4.02%	3.80%	3.92%

* Home settings include: independent living, supported living, Adult Family Home Agency homes, and consumers' family homes.

Did RCEB meet DDS standards?

Read below to see how well RCEB did in meeting DDS compliance standards:

Areas Measured	Last Period	Current Period
Passes independent audit	Yes	Yes
Passes DDS audit	Yes	Yes
Audits vendors as required	Met	Met
Didn't overspend operations budget	Yes	Yes
Participates in the federal waiver	Yes	Yes
CDERs are updated as required (<i>CDER is the Client Development Evaluation Report with information about the consumer's diagnosis</i>)	NA*	96.08%
Intake/Assessment timelines for consumers age 3 or older met	100%	100%
IPP (<i>Individual Program Plan</i>) requirements met	99.86%	99.92%
IFSP (<i>Individualized Family Service Plan</i>) requirements met	88.57%	89.29%

*Measure was temporarily suspended during implementation of the Revised CDER.

What about other performance areas?

In the future, we will measure how well we are doing in other areas, including:

- Increasing the number of consumers who work,
- Getting better pay for consumers who work,
- Making sure consumers get medical and dental services, and
- Meeting Intake/Assessment and IFSP timelines for children 0–3.

Want more information?

To see the complete report, go to www.rceb.org

Or contact Pam Thomas at **(510) 618-7708**

Local Public Policy Outcomes (Optional)

<i>Outcome</i>	<i>Baseline</i>	<i>Plan for Measuring Progress in Achieving Outcome</i>
1. Support Multi-cultural family conferences that address the needs of our culturally diverse East Bay Community.	RCEB co-sponsored five events this past year.	<ul style="list-style-type: none"> • RCEB will co-sponsor two events. • Staff will participate in the planning of these events. • RCEB will actively participate in all events and conduct workshops.
<p><u>Action Taken – Outcome Achieved</u></p> <p>RCEB continues to collaborate with many service providers, advocacy and community agencies to ensure that resources and supports are promoted and supported throughout our community. This past year RCEB co-sponsored three multi-cultural family conferences aimed at addressing the needs of our culturally diverse East Bay Community.</p> <ol style="list-style-type: none"> 1.) Congreso Familiar was held on Saturday, August 14, 2010 at Chabot Community College in Hayward, CA. This all day event included presentations, workshops and resources sharing covering such topics as autism, advocacy, Regional Center services, housing, etc. In addition refreshments, entertainment and childcare were provided to families. Staff from RCEB and La Familia Counseling Services were involved on both the steering committee and as volunteers on the day of the event. Co-Sponsors included RCEB, GGRC, Care Parent Network, Family Resource Network, and Contra Costa ARC. There were over 1,000 attendees at this year’s event. 2.) On June 26, 2010 RCEB co-sponsored a day long event with Asian Community Mental Health Services for Asian consumers and families who were new to the Regional Center system. The event was held at the RCEB San Leandro office and provided information in at least 6 Asian languages. RCEB staff participated in the planning and presentations. 3.) The Transition Conference which was held on January 5, 2010 provided translations in Spanish and ASL for families and consumers. RCEB co-sponsored this event and RCEB staff served on the planning committee, provided staff to the day long conference, and conducted several of the 28 workshops offered. Topics included law, education, employment, relationship, living options, and benefits. There were approximately 250 attendees. 4.) Regional Center of the East Bay continues to co-sponsor family and children’s events for our multicultural consumers and families in honor of cultural celebrations. In December 2010 RCEB sponsored family events and gatherings for our Spanish speaking families and consumers and for our Asian language speaking families and consumers. 5.) Padres Unidos Children’s Holiday Party was held on December 19, 2009 at St. Joseph’s school in Hayward. Approximately 150 families and consumers attended. RCEB staff served as volunteers for the event. Children’s Christmas Party was held for our Asian families and consumers on December 5, 2009 at Garfield Elementary School in Oakland. RCEB staff assisted at this event which was attended by over 250 families and consumers. 		

Local Public Policy Outcomes (Optional)

<i>Outcome</i>	<i>Baseline</i>	<i>Plan for Measuring Progress in Achieving Outcome</i>
2. Families and consumers will be assisted in preparing for transition from school to day/work services.	Three transition fairs and one transition conference were held last year.	<ul style="list-style-type: none"> • RCEB will partner with Education and the Developmental Disabilities Councils in each county to provide two Transition Fairs annually. • RCEB will continue to provide major support/staff time to put on one transition conference in Contra Costa County.

Action Taken – Outcome Achieved

RCEB in partnership with Education and our two local Developmental Disabilities Councils provided three Transition Fairs and one Transition Conference. The Transition Conference was held on January 5, 2010 at Mt. Diablo Community College, in Concord. There were 28 workshops offered covering various issues related to transition age youth including housing, law, living options, relationship, mental health, and sexuality. RCEB staff were instrumental in the planning of this event and participated throughout the day, facilitating registration, monitoring workshops and participating in presentations. In addition to the workshops, a resource fair was available through out the day and lunch was provided. There were approximately 250 attendees. Translation was available in both Spanish and ASL.

One Transition Fair was held in Alameda County on March 27, 2010 at the College of Alameda. Two Transition Fairs were held in Contra Costa County, one on October 22, 2010 at the Willow Creek Center in Pleasant Hill, and one on May 15, 2010 at Vista Hills in Richmond. Each Fair included resource tables, opportunities to speak directly with service providers, and presentations on various topics including living options, health care, and employment. RCEB staff participated in the planning of the Fairs and provided support during the events. Over 500 consumers and families attended the Transition Fairs in Contra Costa County and approximately 250 attended the Fair in Alameda.

Local Public Policy Outcomes (Optional)

<i>Outcome</i>	<i>Baseline</i>	<i>Plan for Measuring Progress in Achieving Outcome</i>
<p>3. Given the rise in consumers diagnosed with autism, families have increased needs for training and support. RCEB will increase the number of educational programs and training supports available for families.</p>	<p>RCEB has an Autism Clinical Team which meets regularly and is available to case management and families for consultation. The Autism Resource Team focuses on the development of programs and services, and conducts community outreach. Both the RCEB Autism Spectrum Disorder Specialist and the Autistic Disorder Coordinator conduct community outreach activities and staff training.</p>	<ul style="list-style-type: none"> • RCEB will continue to develop education and training opportunities for families of children with autism. • RCEB will continue to utilize the Autism Clinical Team for support to families and children. • The RCEB Autism Resource Team, which includes Community Services staff, will continue to actively develop new resources and services in areas including family support, residential options and program opportunities for adults.

Action Taken – Outcome Achieved

RCEB’s Autism Resource Team continues to meet monthly, with a focus on the development of services and resources for consumers with autism. The Autism Clinical Team meets twice a month, once in each of the RCEB offices, and is available to families and case managers. Both our Autism Spectrum Disorder Specialist, Dr. Monroe, and our Autism Coordinator continue to provide trainings to staff and educational outreach presentations in our community.

RCEB partnered with other community agencies to sponsor the 2010 STAR conference for parents of children with autism from birth – 8 years of age. The conference was held in April 2010 and almost 100 families attended with interpretation provided for Spanish speaking families. The conference focused on topics of importance to young families including the transition from Early Start to the school district, treatment considerations, and insurance issues. Opportunities were provided for families to meet with each other as well as to familiarize themselves with services at a Resource Fair.

RCEB staff presented at a the Childcare Links Agency conference titled, “Our Focus: The Child and Growing Together “ . The topic was red flags for autism. This conference presentation was in Spanish and targeted childcare providers and families. A similar presentation was conducted in English for childcare providers. These presentations focused on early identification so that children and families could be supported with early identification and intervention.

Local Public Policy Outcomes (Optional)

RCEB introduced group parent training classes for parents with a child with autism who had a plan to receive in home autism intervention services. Families participate in group parent trainings over 4- 6 weeks. These trainings include education on interventions for the child and the weekly trainings have also provided opportunities for networking and support for families. There are two providers offering these trainings on a regular basis. In addition, RCEB continued to provide parent education and support for the parents of children newly diagnosed with autism. In spring 2010, a six week parent training was held to support this group of families.

RCEB provided information to families on educational events and conferences held in the area that provide training and education for families of children with autism. In 2010, RCEB supported the attendance of parents at conferences including the Morgan Autism Center Conference, the M.I.N.D. Institute conference, and a conference specific to social thinking in adolescents and young adults.

RCEB's Autism Clinical Team (ACT) provided direct consultation to over 100 parents and case managers to ensure that appropriate and effective interventions were being provided for children with autism. The team met directly with families and case managers throughout the year to provide support and consultation on appropriate interventions for these children and families. As a result of these consultations children received supports that address social skills and other home and community based issues as a result of participation in the team.

RCEB's Autism Resource Team developed five additional resources for in home ABA programs and social skills training programs to support families and children with autism. We now have three programs that provide PRT (pivotal response treatment), an evidence based intervention that had not previously been available in our area for children with autism. RCEB also began to participate on the advisory board for a College Links program at California State University – East Bay. This board is involved in developing supports for adolescents and young adults with autism who are able to attend a college level program. During 2010, the Autism resource Team continued to work with providers to expand their services to adolescents with autism and is actively working on increasing resources for this age group.